

2000-

4RUNNER

TVIP V3

RS3200
OWNER'S GUIDE



REMOTE KEYLESS SECURITY SYSTEM
DESIGNED SPECIFICALLY FOR YOUR VEHICLE

OWNER'S GUIDE

To better understand the features and functions of this security system, please read this Owner's Guide completely prior to use.

TABLE OF CONTENTS

DESCRIPTION	PAGE
INTRODUCTION	2
REMOTE CONTROL INFORMATION	
THE REMOTE CONTROL INCLUDED WITH YOUR SYSTEM	3
BRIEF DESCRIPTION—RS3200 FEATURES	4, 5
OPERATION	
ARMING THE RS3200 (except PASSIVE ARMING)	6
DISARMING THE RS3200 (except PASSIVE DISARMING)	7
PASSIVE (AUTOMATIC) ARMING & DISARMING	8
AUTOMATIC REARMING	9
ARMING SUSPENSION	9
MISCELLANEOUS	
DOOR AJAR WARNING	10
IGNITION-CONTROLLED DOOR LOCKING/UNLOCKING	10
REMOTE CONTROL RANGE	10
ALARM INFORMATION	
PANIC MODE OPERATION	11
ALARM TRIGGERS	12
ALARM DESCRIPTIONS	13
STOPPING AN ALARM	13
GLASS BREAKAGE SENSOR INFORMATION	
GLASS BREAKAGE SENSOR CHECK PROCEDURE	14
PROGRAMMING	
PASSIVE (AUTOMATIC) ARMING AND ENTRY DELAY	15
DRIVER'S DOOR/ALL DOORS UNLOCK SELECTION	16, 17
IGNITION-CONTROLLED DOOR LOCKING/UNLOCKING	18
REMOTE CONTROL BATTERY REPLACEMENT	
REMOVE THE BATTERY	19
INSTALL THE BATTERY	20
WARNING AND CAUTION INFORMATION	21

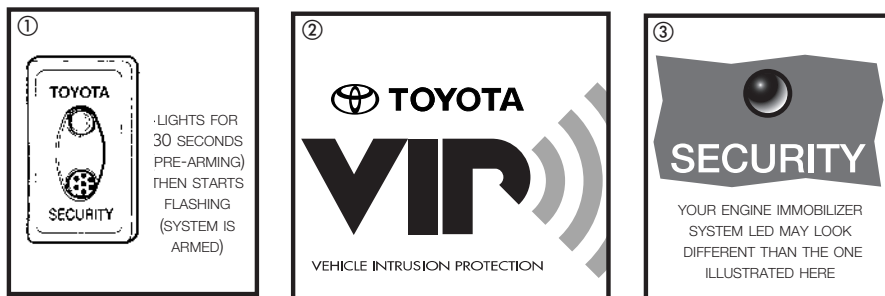
INTRODUCTION

Congratulations on your choice of the RS3200 remote keyless security system to protect your vehicle! To get the most from the system, we strongly recommend that you read this Owner's Guide completely to learn all of its features and functions.

The RS3200 provides the convenience of remote keyless operation, enabling you to ARM and DISARM at the same time you remotely lock and unlock the doors. The system provides comprehensive security protection through point-of-entry monitoring, glass breakage detection and ignition switch monitoring. While ARMED, the system will be TRIGGERED and sound an ALARM when a door, trunk or hatch is forcibly unlocked or opened*, or when a window is tapped on or broken. During the ALARM, the vehicle's horn sounds and the headlights, tail lights and front marker lights flash. Also, the vehicle's starter is disabled, to prevent engine start.

An important note about your system

Throughout this guide, there are references to the STATUS MONITOR^① ② for this system. Illustrated below, this panel holds the LED indicator (for the system's operating status) and the GLASS BREAKAGE SENSOR's microphone. In vehicles with an engine immobilizer, there is already a LED^③ installed in the vehicle, so the RS3200 utilizes the engine immobilizer system LED^③ and a microphone mounted in a separate location. If your vehicle falls into this category, remember to look at that LED when the information refers to the STATUS MONITOR. If you do not know where the LED is located, refer to your vehicle's owner's guide for specific information.



About the ignition-controlled automatic door locking/unlocking function.

The RS3200 is programmed to automatically lock your vehicle's doors when you turn the key in the ignition switch to the "ON" or "START" position, and unlock them when you turn the key back to the "ACC" or "LOCK" position. You may disable this feature by reprogramming the system; refer to page 18 for programming information.

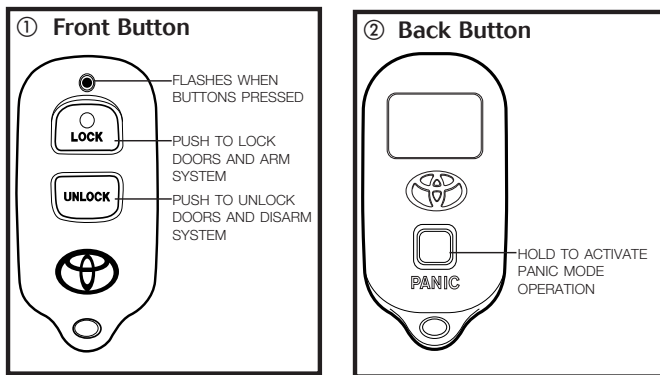
* When the system is PASSIVELY (AUTOMATICALLY) ARMED, there is an ENTRY DELAY that will elapse when a door is opened before an ALARM is TRIGGERED.

REMOTE CONTROL INFORMATION

THE REMOTE CONTROLS PROVIDED WITH YOUR SYSTEM

The 3 button remotes included with your system have separate LOCK and UNLOCK buttons on the front ① and a PANIC button on the back ②.

The RS3200 may be controlled by as many as 4 remote controls, so you may add two additional remote controls to the two included with your system. Contact your Toyota dealer for more details.



NOTE: This equipment has been tested and found to comply with the limits for a class B digital device, pursuant to part 15 of the FCC rules. These limits are designed to provide reasonable protection against harmful interference in a residential installation. This equipment generates, uses, and can radiate radio frequency energy and, if not installed and used in accordance with the instruction manual, may cause harmful interference to radio communications. However, there is no guarantee that interference will not occur in a particular installation. If this equipment does cause harmful interference to radio or television reception, which can be determined by turning the equipment off and on, the user is encouraged to try and correct the interference by one or more of the following measures:

- Reorient or relocate the receiving antenna
- Increase the separation between the equipment and the receiver
- Connect the equipment into an outlet on a circuit different from that to which the receiver is connected
- Consult the dealer or an experienced radio/TV technician for help.

BRIEF DESCRIPTION–RS3200 FEATURES

FEATURES	FUNCTIONS
REMOTE ARMING/DISARMING & LOCKING/UNLOCKING	The RS3200 will ARM 30 seconds after the LOCK button on the remote control is pressed, and DISARM when the UNLOCK button is pressed. When the LOCK button is pressed, all the vehicle's doors lock. When the UNLOCK button is pressed, the driver's door unlocks,* but if the UNLOCK button is pressed again within 3 seconds, the remaining doors unlock.
AUTOMATIC REARMING REARM	The RS3200 will automatically RELOCK the vehicle's doors if no door is opened within 60 seconds after REMOTE DISARMING, the system will 60 seconds later.
KEY ARMING/DISARMING	The RS3200 will ARM 30 seconds after you close the trunk (if open) and lock the vehicle's doors with the key, and will DISARM when you unlock a door with the key.
ARMED MODE SUSPENSION **	While ARMED, the trunk may be opened with the key (or the AUX button on your remote control, if so equipped) without TRIGGERING an ALARM. Once the open trunk is closed, the system ARMS again. (See page 9 for more information.)
PASSIVE (AUTOMATIC) ARMING	The RS3200 may be programmed to automatically ARM 30 seconds after the ignition key is removed, the vehicle exited and the last door and the trunk closed, without the necessity of locking the doors.
PASSIVE DISARMING	The RS3200 may be DISARMED with the vehicle's ignition key after it was PASSIVELY ARMED.
ADJUSTABLE ENTRY DELAY	When the RS3200 has been PASSIVELY ARMED, an ENTRY DELAY (user-selectable at 0, 15, or 30 seconds) will start when a door is opened before an ALARM is TRIGGERED.
MANUAL ARMING	When you lock the vehicle with a central lock switch (while a door is open), the RS3200 will ARM 30 seconds after you close all the doors and the trunk (if open).
IGNITION KEY DISARMING	The RS3200 may be DISARMED by inserting the key into the ignition switch and turning it to "ON."
POINT-OF-ENTRY PROTECTION	Forcibly unlocking or opening a door, hatch or trunk while the RS3200 is ARMED will TRIGGER an ALARM immediately. <i>(If the system was PASSIVELY ARMED, the ENTRY DELAY must pass before the ALARM is TRIGGERED.)</i>
GLASS BREAKAGE SENSOR	The RS3200 utilizes a microphone (usually mounted in the STATUS MONITOR) to sense the noise from tapping on window glass, or glass breaking, and TRIGGER an ALARM. It is fine tuned to "listen" for this type of noise, and ignore other sounds.
WARN AWAY ALARM	When the GLASS BREAKAGE SENSOR's microphone picks up tapping or breaking of window glass, it TRIGGERS a WARN AWAY ALARM; the headlights and tail and marker lights flash, and the horn sounds for 20 seconds, but the starter is not disabled. If there is another detection of glass tapping or breaking, or if a door is opened or unlocked without a key, the regular ALARM is TRIGGERED.
IGNITION SWITCH MONITORING	While ARMED, the RS3200 monitors the ignition switch. If an attempt is made to start the vehicle without a key, an ALARM is triggered.

** Starting from 2002 M.Y., Arming Suspension Mode by using the key to unlock the trunk is not applicable to Camry, Solara, and Corolla.

* You may program the system to unlock all the doors with one press on the UNLOCK button. See page 16 for programming instructions.

BRIEF DESCRIPTION—RS3200 FEATURES

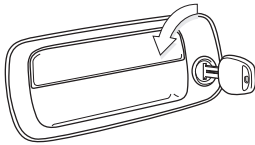
FEATURES	FUNCTIONS
STARTER DISABLE	When an ALARM is TRIGGERED, the system disables the vehicle's starter and prevents engine start until the system is reset (DISARMED).
FORCED LOCK DURING ALARM	During an ALARM, the system will lock the doors if one is unlocked, and will continue to do so for the duration of the ALARM.
TRIGGER MEMORY	The user is notified that an ALARM occurred. Upon DISARMING the system after an ALARM was TRIGGERED, the vehicle's tail and marker lights will be turned on, and the BUZZER sounds, for 2 seconds.
PANIC MODE OPERATION	You may TRIGGER a PANIC ALARM, by pressing the PANIC button on the back of the remote control, to draw attention to your vehicle. During the PANIC ALARM, the head, tail and marker lights flash, and the horn sounds, but the starter is not disabled.
EXTERIOR LIGHT ACTIVATION	The RS3200 flashes the vehicle's tail and marker lights during REMOTE ARMING and REMOTE DISARMING, as well as during an ALARM. Also, the headlights flash during an ALARM.
INTERIOR LIGHT ACTIVATION	When the system is REMOTE DISARMED, it turns on the interior lights in the vehicle for 30 seconds, or until the key is inserted into the ignition switch. It also turns them on during an ALARM.
HORN ACTIVATION	During an ALARM, the RS3200 activates the vehicle's horn.
POWER LOSS MEMORY	If power to the RS3200 is disrupted while it is ARMED, an ALARM is TRIGGERED once power is restored.
STATUS MONITOR	This panel houses the GLASS BREAKAGE SENSOR microphone and the flashing LED that indicates the operating status of the security system. (In vehicles with an engine immobilizer system, that system's LED and a separate microphone are used instead.)
PIEZO BUZZER	The RS3200 utilizes a PIEZO BUZZER, usually mounted in the engine compartment, to sound confirmation "chirps" and tones for function confirmation and programming step confirmation.
IGNITION-CONTROLLED AUTOMATIC DOOR	The RS3200 automatically locks your vehicle's doors when you turn the ignition key to "ON" or "START", and unlocks the doors when you turn the key back to "ACC" or "LOCK".*
LOCK/UNLOCK DOOR AJAR WARNING	The Buzzer sounds for 5 seconds when you attempt to REMOTE ARM the system while a door is open. You can stop the warning by closing the door, or by pressing the UNLOCK button on the remote control.
REMOTE CONTROL TRANSMITTER RANGE	The maximum operating range for the remote controls included with the RS3200 is approximately 50 feet. Please refer to page 10 for a description of factors that may affect the performance (operating range) of the remote controls.

* You may disable this feature. Please refer to page 18 for programming information.

OPERATION

ARMING THE RS3200 (except PASSIVE ARMING)

The system may be ARMED in several ways. Do *one* of the following:

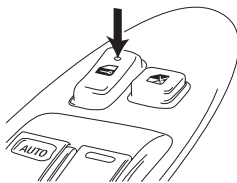


TURN TOWARD THE FRONT
OF THE VEHICLE

Lock the doors with your key:

Remove the key from the ignition switch.
Exit the vehicle, and close all the doors.*
Close the trunk or hatch, if necessary.*
Insert the key into the door key switch and turn it toward the front of the vehicle:

The STATUS MONITOR'S LED turns on for 30 seconds, then starts flashing.^① The system is now ARMED.

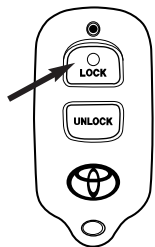


PUSH THE LOCK SWITCH WHILE
THE DOOR IS OPEN

Lock the doors from inside the vehicle:

Remove the key from the ignition switch.
Open the driver's or front passenger's door.
Push the central lock switch.
Exit the vehicle, and close all the doors.*
Close the trunk or hatch, if necessary.* Then:

The STATUS MONITOR'S LED turns on for 30 seconds, then starts flashing.^① The system is now ARMED.



PRESS AND RELEASE
THE LOCK BUTTON

Lock the doors with the remote control:

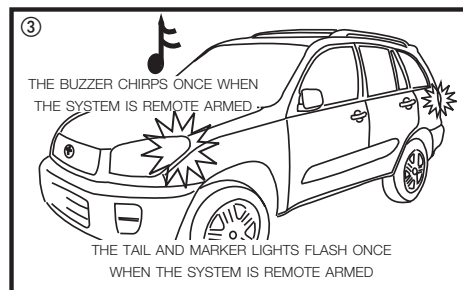
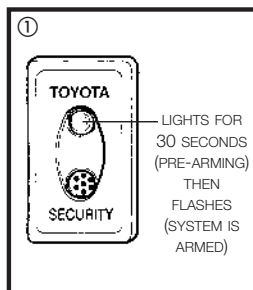
Remove the key from the ignition switch.
Exit the vehicle, and close all the doors.*
Close the trunk or hatch, if necessary.*
Press the LOCK button on the remote control. Simultaneously:

The doors lock.^②

The vehicle's tail and marker lights flash once.^③

The buzzer chirps once.^③

The STATUS MONITOR'S LED turns on for 30 seconds, then starts flashing.^① The system is now ARMED.

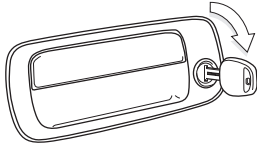


* The system will not ARM while any of the doors, trunk or hatch is open. However, when you press the LOCK button when the trunk is open, the doors will lock; the system will arm 30 seconds after the trunk is closed.

OPERATION

DISARMING THE RS3200 (except PASSIVE DISARMING)

The system may be DISARMED in several ways. Do *one* of the following:



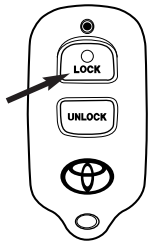
TURN TOWARD THE REAR
OF THE VEHICLE

Unlock the doors with your key:

Insert the key into the door key switch and turn it toward the rear of the vehicle:

The STATUS MONITOR'S LED stops flashing.^① The system is now DISARMED.*

In the case of Sienna and 4Runner, you may also disarm the system using the key in the back door; all the doors will unlock at the same time. This feature is not available for Celica; you must disarm the system before opening the hatch, or else an ALARM will be Triggered.



PUSH THE UNLOCK BUTTON

Unlock the doors with the remote control:

Press the UNLOCK button on the remote control. Simultaneously:

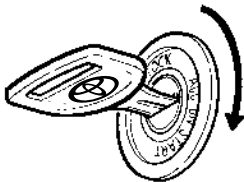
The driver's door unlocks.^②

The vehicle's tail and marker lights flash twice.^③

The interior lights turn on for 30 seconds.^③

The STATUS MONITOR'S LED stops flashing.^① The system is now DISARMED.*

Press the UNLOCK button again within 3 seconds after unlocking the driver's door to unlock the remaining doors.



TURN THE KEY TO "ON" TO
DISARM THE SYSTEM

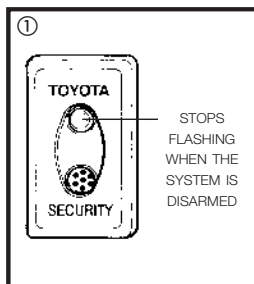
Use the ignition switch:

Insert the key into the ignition switch, then turn it to ON.

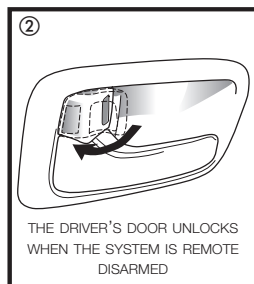
The STATUS MONITOR'S LED stops flashing.^① The system is now DISARMED.*

This method of disarming is rarely used. You must be inside the vehicle while the system is armed in order to do it.

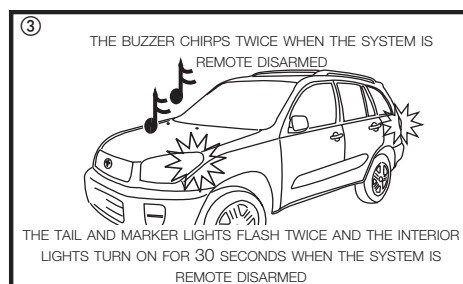
NOTE: If your vehicle's tail and marker lights turn on and the buzzer sounds for 2 seconds when the system is DISARMED, the TRIGGER MEMORY was activated; an ALARM was TRIGGERED while you were away from the vehicle.



STOPS
FLASHING
WHEN THE
SYSTEM IS
DISARMED



THE DRIVER'S DOOR UNLOCKS
WHEN THE SYSTEM IS REMOTE
DISARMED



THE BUZZER CHIRPS TWICE WHEN THE SYSTEM IS
REMOTE DISARMED

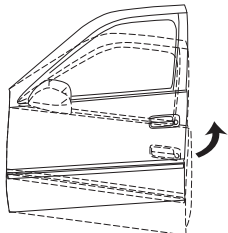
THE TAIL AND MARKER LIGHTS FLASH TWICE AND THE INTERIOR
LIGHTS TURN ON FOR 30 SECONDS WHEN THE SYSTEM IS
REMOTE DISARMED

* Please note, if the system utilizes your vehicle's engine immobilizer system LED instead of the STATUS MONITOR, the LED will continue to flash.

OPERATION

PASSIVE (AUTOMATIC) ARMING & DISARMING

When the RS3200 is programmed to PASSIVELY ARM, the system will ARM after the ignition key is removed and all doors and the trunk or hatch are closed; you do not need to lock the doors. When you come back to your vehicle and open a door, you must insert the key into the ignition switch and turn it to "ON" during the ENTRY DELAY (0, 15 or 30 seconds), or an ALARM will be TRIGGERED. If you lock the doors, regular ARMING will override PASSIVE ARMING; there will be no ENTRY DELAY. See the PROGRAMMING section on page 15 to activate the PASSIVE ARMING mode, as well as select the ENTRY DELAY time.



THE SYSTEM ARMS 30 SECONDS
AFTER THE LAST ENTRY POINT
(DOOR, TRUNK OR HATCH)
IS CLOSED

To PASSIVELY ARM the system:

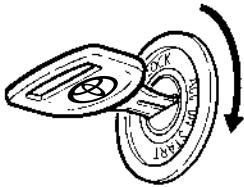
Remove the key from the ignition switch.

Exit the vehicle, and close all the doors. *(The system will not ARM while any of the doors are open.)*

Close the trunk or hatch, if necessary. *(The system will not ARM while the trunk or hatch is open.)*

After the last door, trunk or hatch is closed:

The STATUS MONITOR'S LED turns on for 30 seconds, then starts flashing.^① The system is now ARMED.



THE SYSTEM DISARMS WHEN
YOU INSERT THE KEY AND TURN IT
TO "ON"

To DISARM the PASSIVELY ARMED system:

Enter the vehicle through a front door.

The ENTRY DELAY begins:

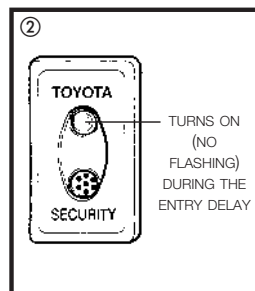
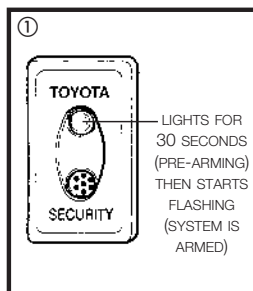
The STATUS MONITOR'S LED turns on (no flashing.)^②

Insert the key into the ignition switch and turn it to "ON" before the ENTRY DELAY ends.*

The LED turns off. The system is now DISARMED.

You may also DISARM the system following any of the methods described on page 7.

NOTE: If your vehicle's tail and marker lights turn on and the buzzer sounds for 2 seconds when the system is DISARMED, the TRIGGER MEMORY was activated; an ALARM was TRIGGERED while you were away from the vehicle.



* If the ENTRY DELAY time elapses before the ignition switch is turned to "ON", an ALARM will be TRIGGERED. To DISARM the system during an ALARM, insert the ignition key and turn it to "ON", or press and release the remote control's UNLOCK button.

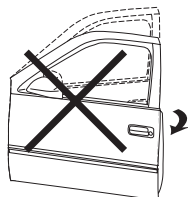
OPERATION

AUTOMATIC REARMING

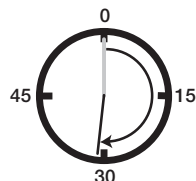
When you unlock the doors using the remote control, the RS3200 is DISARMED at the same time. However, if you do not open a door or the trunk or hatch within 30 seconds, the system will relock the doors and the RS3200 will REARM 30 seconds later



THE DOORS ARE UNLOCKED BY PRESSING THE UNLOCK BUTTON ON THE REMOTE CONTROL...



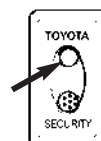
WHEN NO DOOR, TRUNK OR HATCH IS OPENED...



FOR MORE THAN 30 SECONDS...



THE RS3200 AUTOMATICALLY RELOCKS THE DOORS, THEN AUTOMATICALLY REARMS.

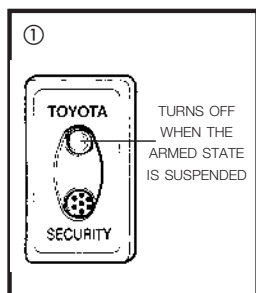


THE LED LIGHTS UP FOR 30 SECONDS (PRE-ARM), THEN FLASHES WHEN THE SYSTEM IS ARMED

How the RS3200 automatically REARMS:

ARMING SUSPENSION **

The ARMED state of the RS3200 can be suspended temporarily by using the key to unlock and open the trunk. When the ARMING is suspended, the STATUS MONITOR'S LED will turn off^① until the trunk is closed again.



** Starting from 2002 M.Y., Arming Suspension Mode by using the key to unlock the trunk is not applicable to Camry, Solara, and Corolla.

MISCELLANEOUS

DOOR AJAR WARNING

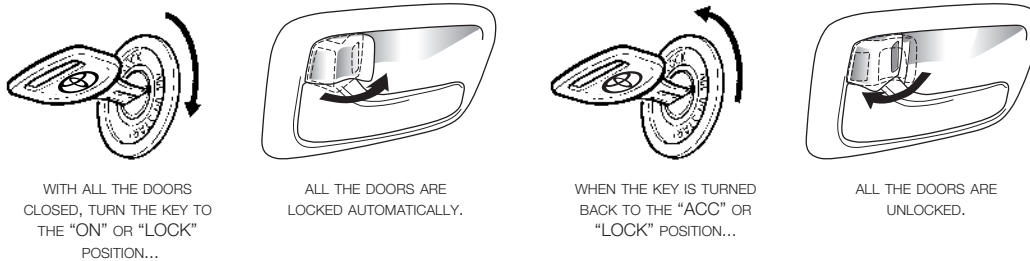
The RS3200 will sound a five second DOOR AJAR WARNING when you attempt to REMOTE ARM the system while a door is open. To stop the warning tone, either close the open door, or press and release the UNLOCK button on the remote control. To ARM the system, press the LOCK button again.

Note: The DOOR AJAR WARNING will not sound when the trunk is open; the doors will lock, but the system will not ARM until the trunk or hatch is closed.

IGNITION-CONTROLLED DOOR LOCKING/UNLOCKING

The RS3200 is programmed to automatically lock your vehicle's doors when you turn the ignition key to "ON" or "START", and unlock the doors when you turn the key back to "ACC" or "LOCK". If you start the vehicle while a door is open, the system will not lock the doors; you must lock them manually.

How the RS3200 automatically locks and unlocks the doors:



This feature may be defeated by changing the system's programming. Refer to page 18 for programming instructions.

REMOTE CONTROL RANGE

The maximum range for the RS3200's remote controls is 50 feet. However, several factors that may affect your remote control's actual performance, include, but are not limited to:

- ⇒ The remote control's battery strength* (weak battery = decreased performance).
- ⇒ Your position relative to the vehicle (dependent on the system's antenna wire location).
- ⇒ Objects in the path between you and your vehicle.
- ⇒ Your surroundings (in a parking structure, out in the open, etc.).
- ⇒ Outside electrical interference caused by high tension power lines, etc.

* As the REMOTE CONTROL's battery becomes weaker, the LED indicator becomes dimmer. When you notice the LED becoming dimmer, you should replace the battery.

ALARM INFORMATION

PANIC MODE OPERATION

When you are confronted by a threatening situation, you may call attention to your vehicle by pressing the PANIC button on the back of the remote control. Unless you DISARM the PANIC ALARM by one of the described methods, it will continue for 60 seconds, then stop.



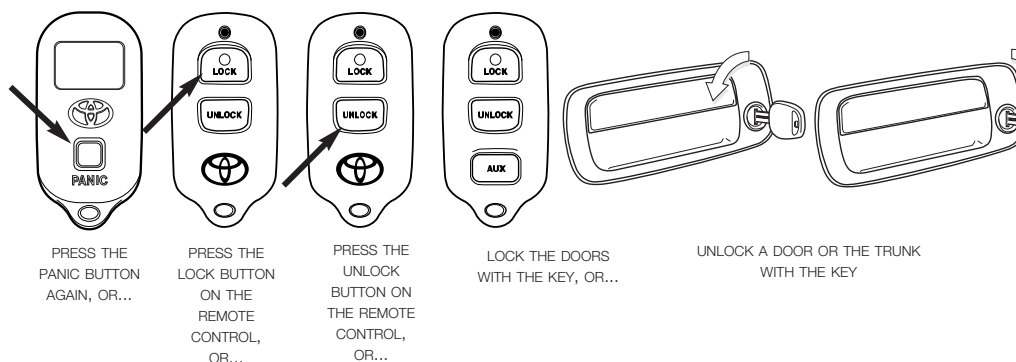
To activate the PANIC ALARM:

Press the PANIC button on the back of the remote control. Simultaneously:

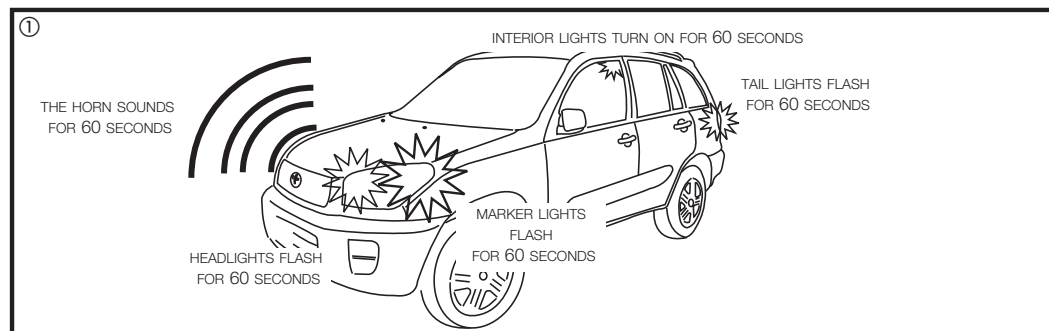
- The horn sounds repeatedly for 60 seconds.^①
- The headlights flash repeatedly for 60 seconds.^①
- The tail and marker lights flash repeatedly for 60 seconds.^①
- The interior lights turn on for 60 seconds.^①

To disarm the Panic Alarm:

Do one of the following shown below.



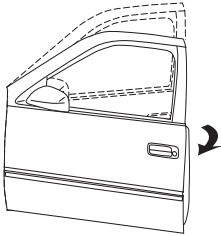
You may activate a PANIC ALARM at any time, except when the key is in the ignition switch and turned to the "ON" position. If the system detects an ALARM TRIGGER during the PANIC ALARM, the regular ALARM takes over. See ALARM INFORMATION on pages 12 and 13 for additional information.



ALARM INFORMATION

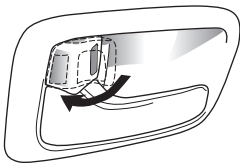
ALARM TRIGGERS

While the system is ARMED, an ALARM will be TRIGGERED when any of the following occurs:



- ➔ **Forcibly opening a door, or the trunk or hatch without a key**

Pulling the trunk or hatch release lever inside the vehicle will also TRIGGER an ALARM.



- ➔ **Manually unlocking a door**

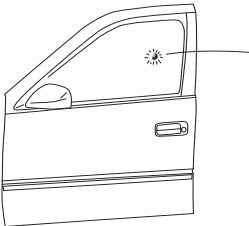
Manually operating an inside lock button will TRIGGER an ALARM.

Note: Because this action will TRIGGER an ALARM, it is important that you do not ARM the system while someone is in the vehicle.



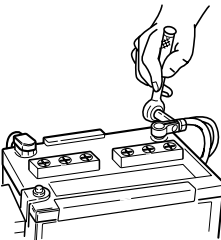
- ➔ **"Hot wiring" the vehicle**

The RS3200 can detect the absence of the ignition key if the ignition circuit is shorted in attempt to start the vehicle.



- ➔ **Tapping on or breaking the glass**

The noise from tapping on, or breaking of glass TRIGGERS a WARN AWAY ALARM first, then a regular ALARM. See the description of how the GLASS BREAKAGE SENSOR TRIGGERS ALARMS on page 14.



- ➔ **Power restoration**

If power to the system is interrupted while it is ARMED, an ALARM will be TRIGGERED immediately when power is restored.

ALARM INFORMATION

ALARM DESCRIPTIONS

Regular ALARM^①

When an ALARM is triggered in any way other than initial detection by the GLASS BREAKAGE SENSOR, the following occur:

The horn sounds repeatedly for 60 seconds.

The headlights flash repeatedly for 60 seconds.

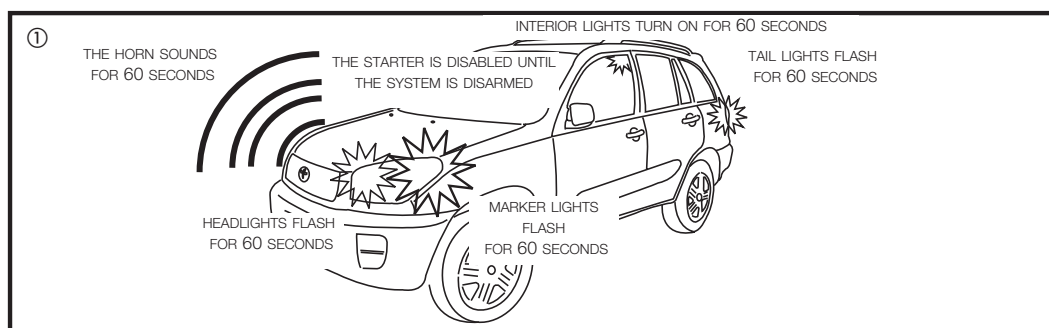
The tail and marker lights flash repeatedly for 60 seconds.

The interior lights turn on for 60 seconds.

The starter is disabled (no engine start) until the system is DISARMED.

The door lock will be relocked if someone reaches in and unlocks the inside lock button.

After 60 seconds of ALARM, the system will REARM and continue to protect the vehicle.



WARN-AWAY ALARM^②

Upon initial detection of noise from tapping on, or breaking glass, the GLASS BREAKAGE SENSOR TRIGGERS a WARN AWAY ALARM:

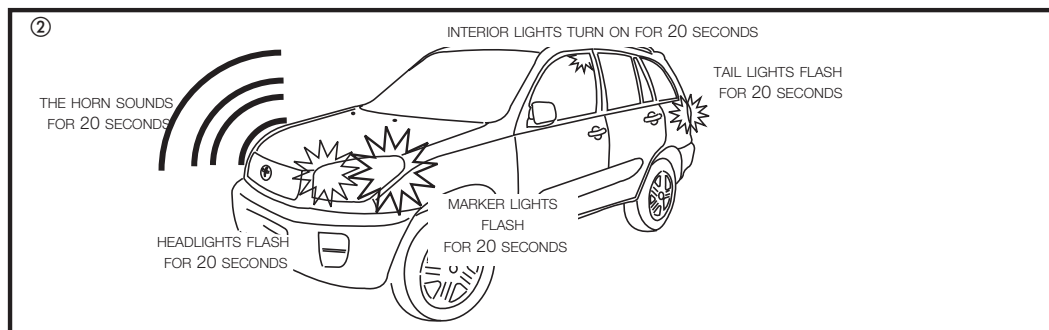
The horn sounds repeatedly for 20 seconds.

The headlights flash repeatedly for 20 seconds.

The tail and marker lights flash repeatedly for 20 seconds.

The interior lights turn on for 20 seconds.

If the GLASS BREAKAGE SENSOR detects noise again, or if a door or trunk or hatch is opened while the system is still ARMED, the regular ALARM (described above) is activated.



STOPPING AN ALARM

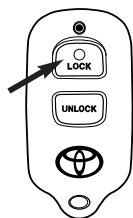
Simply DISARM the system using the remote control or key as described on page 7.

GLASS BREAKAGE SENSOR INFORMATION

The RS3200 provides protection for your vehicle above and beyond entry point monitoring—it “listens” for the noise made by tapping on, or breaking of glass. Using a microphone designed specifically for this task, the GLASS BREAKAGE SENSOR is capable of ignoring other noises, which helps to prevent “false alarms” from occurring.

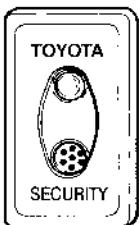
GLASS BREAKAGE SENSOR CHECK PROCEDURE

When the RS3200 was installed in your vehicle, care was taken to adjust the sensitivity level of the GLASS BREAKAGE SENSOR. You may observe how it works following the procedure listed below.

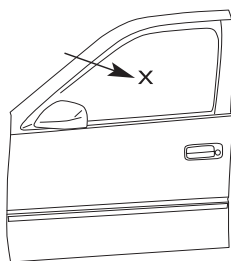


- 1. ARM the system.**
Press the LOCK button on the remote control or lock the doors with the key.

(Remember, the system will not ARM if any door, the trunk or hatch is open.)



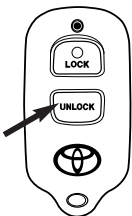
- 2. Wait until the STATUS MONITOR'S LED starts flashing.**
The LED will flash 30 seconds after the last door, the trunk or hatch is closed.



- 3. With the tip of a key, tap the center of the driver's door window.**
Tap the glass with light to moderate force.

WARNING: Do not hit the glass with excessive force, especially in cold weather, or you may crack or break it.

A WARN AWAY ALARM should be TRIGGERED. If the ALARM is not TRIGGERED, make sure you performed the procedure correctly and try again. If you find that the system did not perform as expected, contact your Toyota dealer for more information.



- 4. DISARM the system to stop the WARN AWAY ALARM.**
Press the UNLOCK button on the remote control or use the key to DISARM the system.

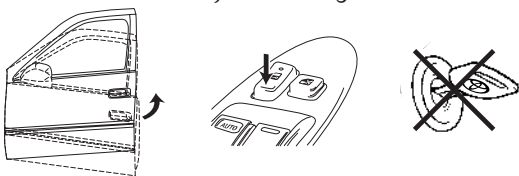
PROGRAMMING

PASSIVE ARMING ON/OFF SELECTION, ENTRY DELAY TIME SELECTION

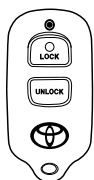
The RS3200 is factory-set to *not* PASSIVELY ARM. To change the system's operation for PASSIVE ARMING operation, as well as adjust the ENTRY DELAY time, follow the procedure below. For more information on this feature, please refer to page 8.

1. Before you begin:

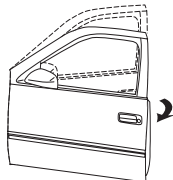
Close all the doors, and the trunk or hatch.
Unlock all the doors with the inside lock switch.
Remove the key from the ignition switch.



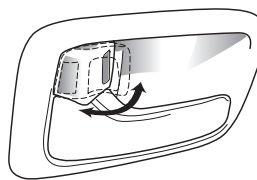
2. Start the Programming Procedure. (Complete these steps within 30 seconds.)



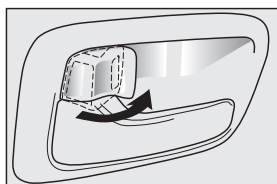
a. Using the remote control, **lock**, then **unlock** the doors **3 times**.



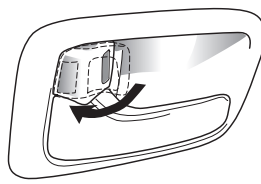
b. **Open** the driver's door.



c. **Lock**, then **unlock** the driver's door inside lock button **3 times**.

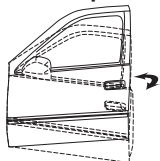


d. The system locks the door in 2 seconds; if this does not happen, start over.

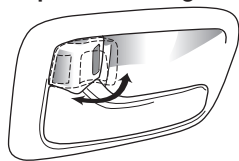


e. **Unlock** the driver's door inside lock button.

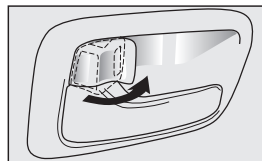
3. Select the Operating Mode and Complete the Programming Procedure.



a. **Close**, then **Open** the door:
2 times = PASSIVE ARMING **OFF**
3 times = PASSIVE ARMING **ON**,
0 Sec. ENTRY DELAY
4 times = PASSIVE ARMING **ON**,
15 Sec. ENTRY DELAY
5 times = PASSIVE ARMING **ON**,
30 Sec. ENTRY DELAY



b. **Lock** then **unlock** the driver's door inside lock button **1 time**.

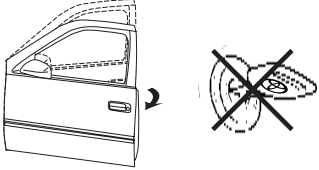
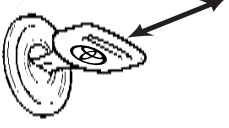
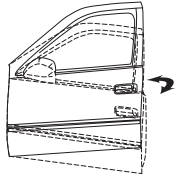

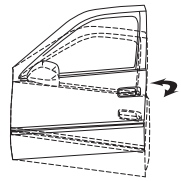
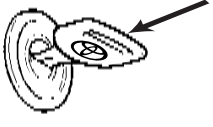
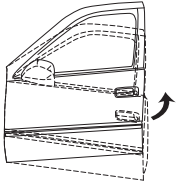
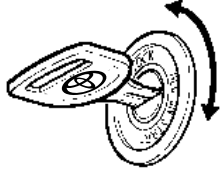
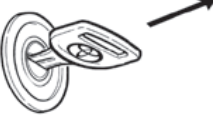

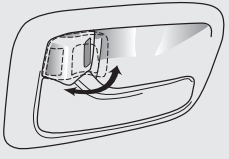


c. The system locks the door in 2 seconds; if this does not happen, start over. Programming is now complete.

PROGRAMMING

DRIVER'S DOOR/ALL DOORS UNLOCK SELECTION

The RS3200 is factory-set to unlock the driver's door when the UNLOCK button is pressed on the remote control, then unlock the remaining doors when the UNLOCK button is pressed again within 3 seconds. You may change the programming so all doors will unlock at once when the UNLOCK button is pressed by following the steps below.

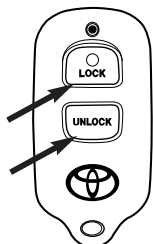
<p>1. Before you begin: Open the driver's door. Remove the key from the ignition switch.</p> 	<p>2. Start the Programming Procedure. (Complete these steps within 40 seconds.)</p>  	
<p>a. Insert the key into, and remove it from the ignition switch 2 times.</p>	<p>b. Close, then open the driver's door 2 times.</p>	
<p>c. Insert the key into, and remove it from the ignition switch 1 time.</p> 	<p>d. Close, then open the driver's door 2 times.</p> 	
<p>e. Insert the key into the ignition and leave it in.</p> 	<p>f. Close the driver's door.</p> 	
<p>g. Turn the key from LOCK to ON 4 times (ending at LOCK.)</p> 	<p>h. Remove the key from the ignition switch.</p> 	
<p>i. The tail and marker lights flash 4 times, the buzzer chirps 4 times, and the doors lock and unlock 4 times.</p>  		

Note: If the system does not activate the lights and buzzer, start over.

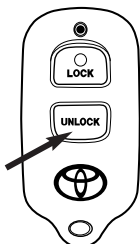
PROGRAMMING

DRIVER'S DOOR/ALL DOORS UNLOCK SELECTION (continued)

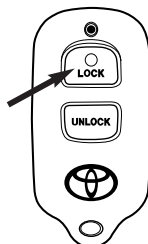
3. Select the Operating Mode and Complete the Programming Procedure.



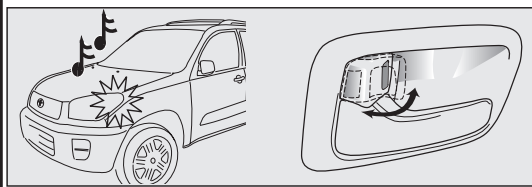
- a. Press and release both LOCK and UNLOCK buttons at the same time.



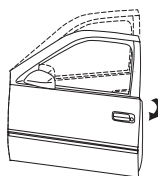
- b. Press and release the UNLOCK button once for **all doors unlock**.



- or Press and release the LOCK button once for **driver's door unlock**.



- i. The tail and marker lights **flash 1** time, the buzzer **chirps 1** time, and the doors lock and unlock **1** time.



- e. Open the driver's door; programming is now complete.

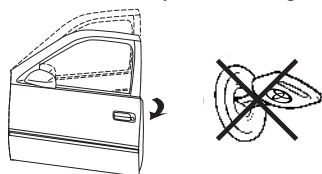
Note: If the system locks the doors twice, start over.

PROGRAMMING

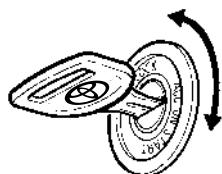
IGNITION-CONTROLLED AUTOMATIC DOOR LOCK/UNLOCK

The RS3200 is factory-set to automatically lock your vehicle's doors when you turn the ignition key to "ON" or "START", and unlock the doors when you turn the key back to "ACC" or "LOCK". To change the programming of this feature, follow the procedure shown below.

1. **Before you begin:**
Open the driver's door.
Remove the key from the ignition switch.



2. **Start the Programming Procedure.** (Complete these steps within 30 seconds.)



- a. Insert the key into the ignition switch and **turn it from LOCK to ON 5 times** (ending at ON).

Note: If the system does not activate the lights and buzzer, start over.

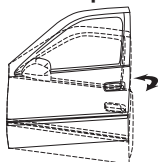


- b. The tail and marker lights **flash once**, and the buzzer **chirps once**.

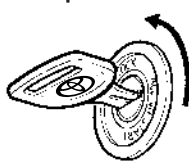


- c. The STATUS MONITOR'S LED (or the engine immobilizer system's LED) turns on for 30 seconds.

3. **Select the Operating Mode and Complete the Programming Procedure.**



- a. **Close the door = IG. Controlled Door Locks ON**
Close, then open and close the door again = IG. Controlled Door Locks OFF



- b. **Turn the ignition key back to lock.**



- c. The tail and marker lights **flash once** and the buzzer **chirps once** when the system is set for **IG door lock control ON**, **twice** for **IG door lock control OFF**. If this does not happen, start over. Programming is now complete.

REMOTE CONTROL BATTERY REPLACEMENT

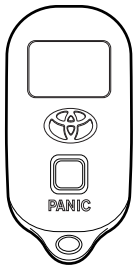
The following shows the procedure to replace the batteries in your remote controls. We recommend that you replace the batteries at least once a year, or when the remote control's transmitting range diminishes. You may obtain the replacement battery from your Toyota dealer, as well as many retailers that sell watch batteries. *The battery replacement type is a Lithium CR2025.*

Important notes on battery replacement:

When replacing the battery, be careful not to lose the components.

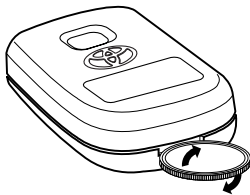
Take care not to bend or damage the rubber gasket.

REMOVE THE BATTERY



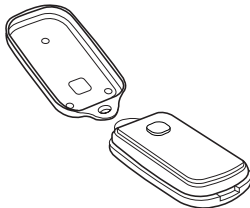
1. Lay the remote control on a towel or other soft material.

Place it with the back side facing up.

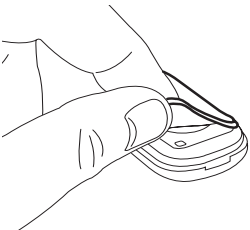


2. Using a coin, pry open the remote control.

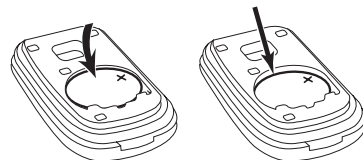
Use gentle pressure to avoid deforming the plastic.



3. Set the back cover aside.



4. Remove the rubber gasket and set it aside.

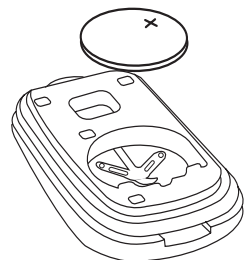


5. Push the battery down and toward you, and hold it down.

6. Pry the back edge of the battery up and toward you.

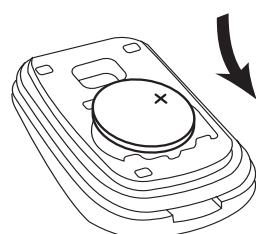
REMOTE CONTROL BATTERY REPLACEMENT

INSTALL THE BATTERY



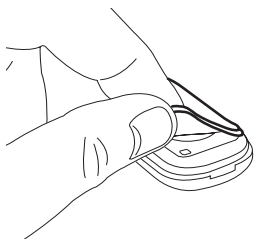
1. Hold the battery with the plus side up.

Handle the battery with a cloth or tissue; body oils and moisture can interfere with operation and may reduce the life of the battery.



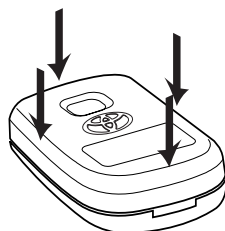
2. Insert the new battery as shown.

Place the edge of the battery in the contacts first, then slide the battery back and down.



3. Place the rubber gasket back on the remote control.

Make sure the gasket is seated properly.



4. Place the back cover back on the top half of the remote control.

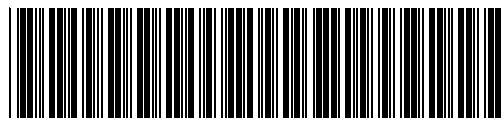
Place even pressure and listen for the halves to "snap" together.

Warning

- This product is applicable only to vehicles with 12V DC, negative grounding specifications. *Do not use in vehicles with 24V specifications.* Otherwise, damage to the unit or a fire may result.
- To prevent accidents from occurring, keep the remote controls' batteries out of the reach of children. In the event a battery is swallowed, consult a physician immediately.
- Never attempt to disassemble or modify the product. Otherwise, an accident, fire or electric shock may result.
- When replacing fuses, be sure to use fuses with the same specified capacity (amperage.) Otherwise, damage to the unit or vehicle, fire or electric shock may result.
- If an abnormal condition occurs, such as liquids spilling onto the product, or the product emitting smoke or strange odors, stop using it immediately and consult the dealer from whom you purchased the product. Continued use of the product before corrective actions are taken may result in an accident, injury or fire.
- Never pull the plastic bag over your head. Otherwise, a serious injury or death from suffocation may occur.

Caution

- Do not use batteries other than the type specified.
- When placing batteries into the product, insert them as shown, paying close attention to the polarities (+ and -). If inserted improperly, the battery may explode, or leak electrolyte and contaminate the surrounding area.
- Do not use this product for applications other than in-vehicle use. Otherwise, an electric shock or injury may result.
- Do not allow children to play with the remote controls. Otherwise, the doors may be locked or unlocked, the security system armed or disarmed, or an alarm triggered unintentionally.
- If this product is dropped or its case is damaged, disconnect the power supply lead and contact the dealer from whom you purchased it to obtain service. Otherwise, a fire or electric shock may result.



090002-2475A700

090002-2475A700